

www.churchandhawes.com

19 Reeves Way, South Woodham Ferrers,
Essex, CM3 5XF

Tel: 01245 329429

swf@churchandhawes.com

Church & Hawes

Est.1977

Estate Agents, Valuers, Letting & Management Agents



82 Tylers Ride, South Woodham Ferrers, CM3 5ZT

Price £160,000

An exceptionally well presented spacious first floor, two double bedroom apartment, one of the largest within the development, set within this modern McCarthy & Stone retirement development overlooking the landscaped communal gardens, set within the heart of South Woodham Ferrers with its shops and amenities close to hand, this particular property offers a good size lounge with feature fireplace, fitted kitchen, two bedrooms, modern re fitted shower room, recently redecorated throughout, ground floor residents lounge with social gatherings organised daily, a communal laundry room, in house manager, 24 hour care-line, passenger lifts and security entry phone system. Offered for sale with no onward chain. Leasehold Council tax band D Service Charge £4,952 P.A.



FIRST FLOOR

Entered via solid door with spy hole into spacious entrance hall.

ENTRANCE HALL

Wall mounted security entry phone handset, storage heater, two built in storage cupboards, further built in airing cupboard housing hot water tank.

LOUNGE 23'4 x 12'3 (7.11m x 3.73m)

PVCu double glazed window to rear elevation, feature fire place with raised hearth and electric coal & flame effect fire, wall mounted storage heater, emergency pull cord, glazed double doors to kitchen.

KITCHEN 7'6 x 7'3 (2.29m x 2.21m)

PVCu double glazed window to rear elevation, fitted with a range of eye & base level units, laminate work surface, inset sink unit, integrated electric oven, integrated electric hob with extractor fan over, plumbing for washing machine, space for fridge/freezer, Care line pull cord.

BEDROOM ONE 13'3 x 9'4 (4.04m x 2.84m)

PVCu double glazed window to rear elevation, built in wardrobes with folding mirror doors, shelving & hanging space, illuminated light switch, wall mounted storage heater, coved ceiling.

BEDROOM TWO 13'8 x 9'3 (4.17m x 2.82m)

PVCu double glazed window to rear, illuminated light switch, convector heater, care line pull cord, coved ceiling.

SHOWER ROOM

Tiled and fitted with a suite comprising walk in shower cubicle, w.c with low level flush, vanity unit, wall mounted electric heater.

COMMUNAL LOUNGE

Resident communal lounge with kitchen, and house keepers office.

LAUNDRY ROOM

Three washing machines, Three tumble dryers which can be used at residents' convenience.

SECONDARY RESIDENTS ROOM

Further room available which can be used for functions.

COMMUNAL GARDENS

Landscaped communal gardens

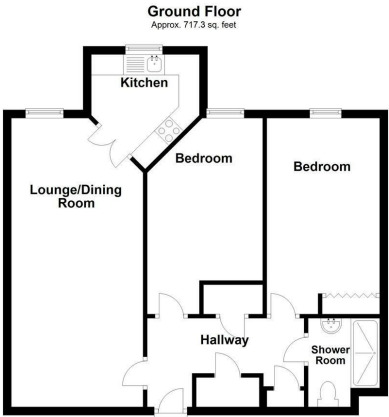
AGENTS NOTE

Agents Note & Money Laundering & Referrals

AGENTS NOTE: These particulars do not constitute any part of an offer or contract. All measurements are approximate. No responsibility is accepted as to the accuracy of these particulars or statements made by our staff concerning the above property. We have not tested any apparatus or equipment therefore cannot verify that they are in good working order. Any intending purchaser must satisfy themselves as to the correctness of such statements within these particulars. All negotiations to be conducted through Church and Hawes. No enquiries have been made with the local authorities pertaining to planning permission or building regulations. Any buyer should seek verification from their legal representative or surveyor.

MONEY LAUNDERING REGULATIONS: Intending purchasers will be asked to produce identification documentation and we would ask for your co-operation in order that there is no delay in agreeing a sale

REFERRALS: As an integral part of the community and over many years, we have got to know the best professionals for the job. If we recommend one to you, it will be in good faith that they will make the process as smooth as can be. Please be aware that a some of the parties that we recommend (certainly not the majority) may on occasion pay us a referral fee up to £200. You are under no obligation to use a third party we have recommended.



Total area: approx. 717.3 sq. feet

Produced by PTEPC Limited. Disclaimer: All floorplans are provided for informational and illustrative purposes only. Although we endeavour to provide truthful representation, we do not in any way warrant the accuracy of the floorplan information and the floorplan layout and measurements may contain errors and omissions. We are not liable for and do not accept any liability relating to any loss or damage suffered as a direct or indirect result of use of any information. You or your advisors should conduct a careful, independent investigation of the property to determine to your satisfaction as to the suitability of the property for your full requirements. Plan produced using PlanUp.

